

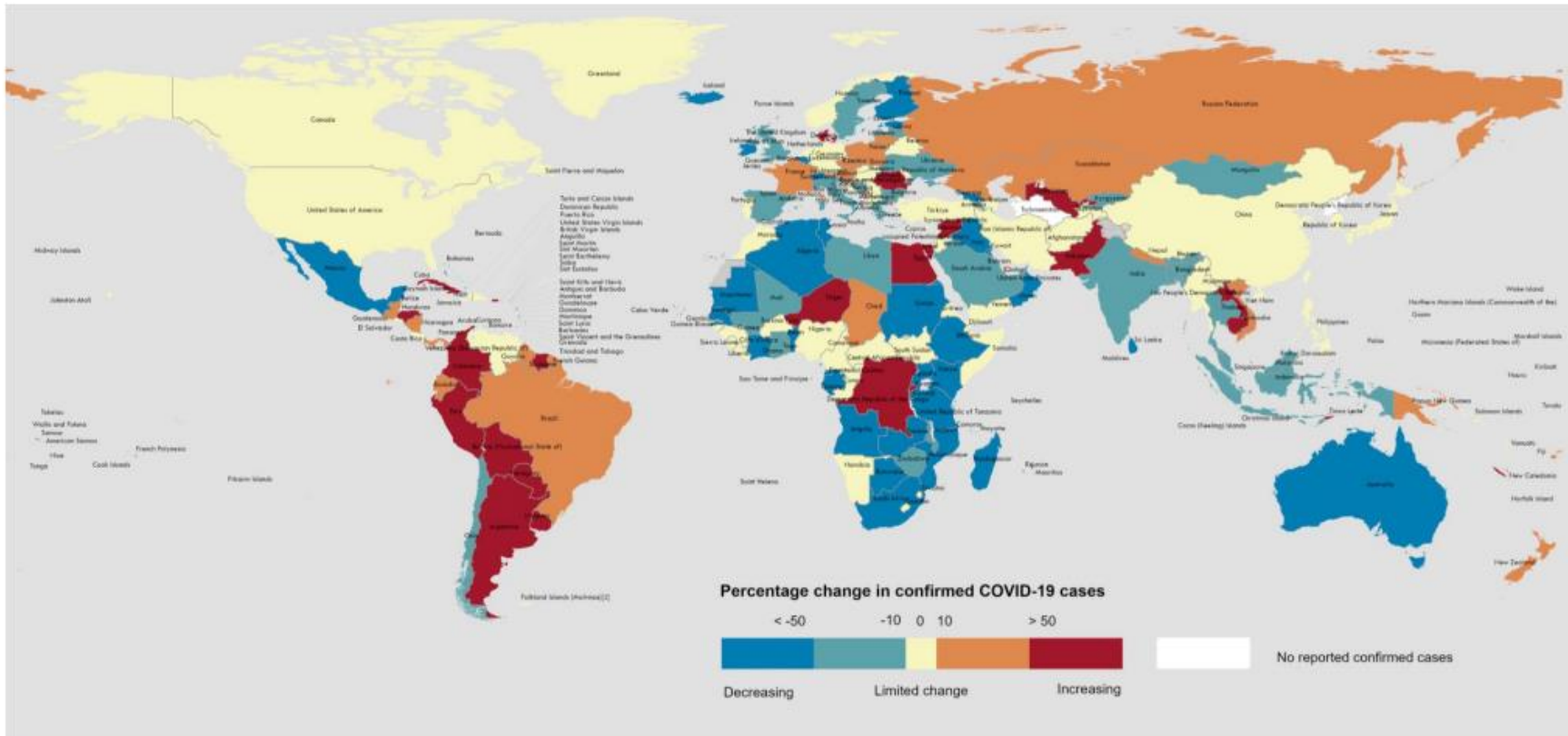
# Pressbriefing om covid-19 med socialminister Jakob Forssmed, Karin Tegmark Wisell, Folkhälsomyndigheten och Taha Alexandersson, Socialstyrelsen

2022-12-09



# Fall globalt covid-19

Figure 2. Percentage change in confirmed COVID-19 cases over the last seven days relative to the previous seven days, 28 November to 4 December 2022\*\*



Vecka 48 t o m 4 dec

Data Source: World Health Organization

Map Production: WHO Health Emergencies Programme

Not applicable

0 2,500 5,000 km  
© World Health Organization 2022. All rights reserved.

The designations employed and the presentation of the material in this publication do not imply the expression of any opinion whatsoever on the part of WHO concerning the legal status of any country, territory, city or area or of its authorities, or concerning the delimitation of its frontiers or boundaries. Dotted and dashed lines on maps represent approximate border lines for which there may not yet be full agreement. [1] All references to Kosovo in this document should be understood to be in the context of the United Nations Security Council resolution 1244 (1999). Number of cases of Serbia and Kosovo (UNSCR 1244, 1999) have been aggregated for visualization purposes. [2] A dispute exists between the Governments of Argentina and the United Kingdom of Great Britain and Northern Ireland concerning sovereignty over the Falkland Islands (Malvinas). Data for Bonaire, Sint Eustatius and Saba have been disaggregated and displayed at the subnational level.

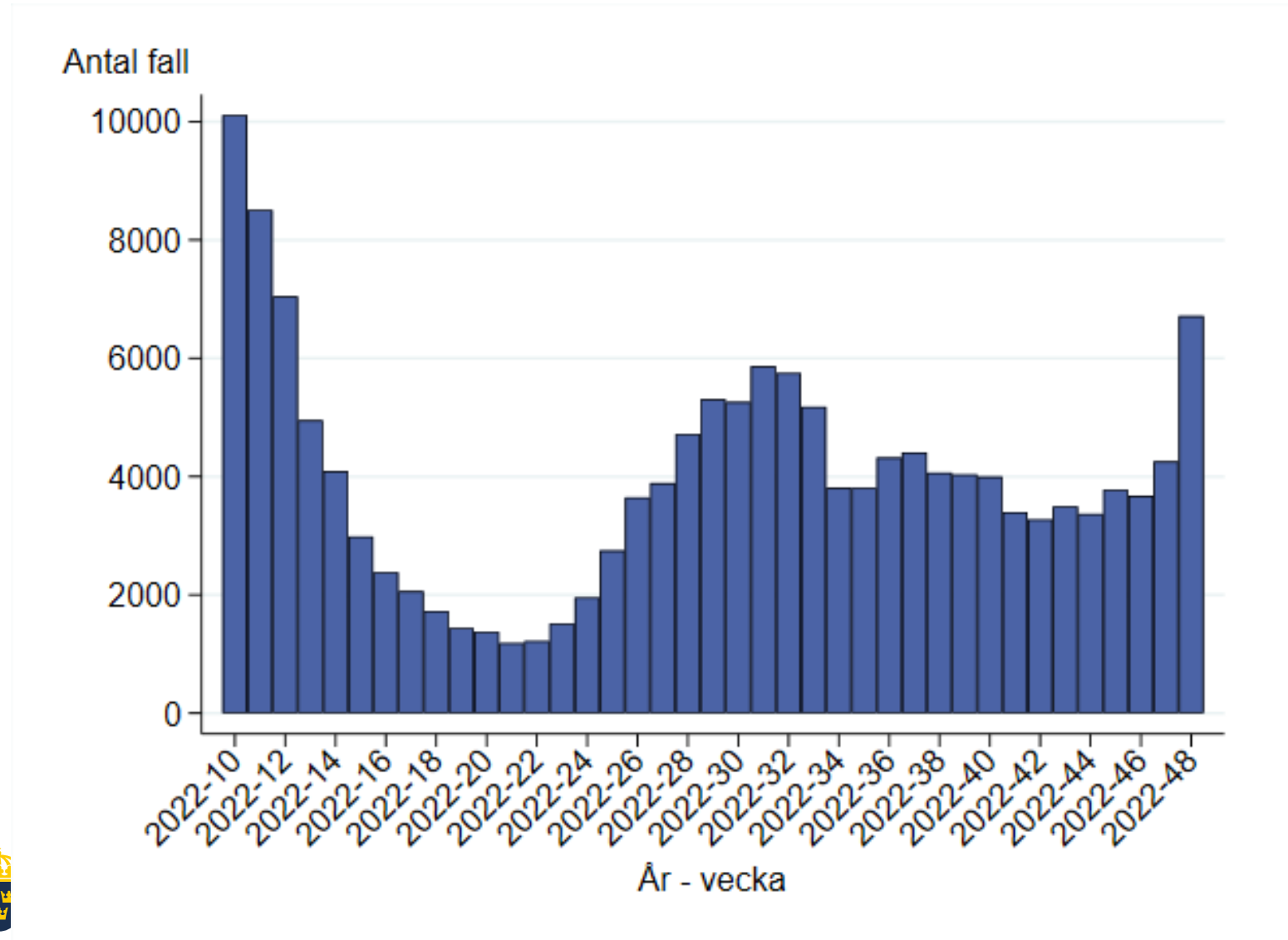


Regeringskansliet



Folkhälsomyndigheten

# Bekräftade fall covid-19

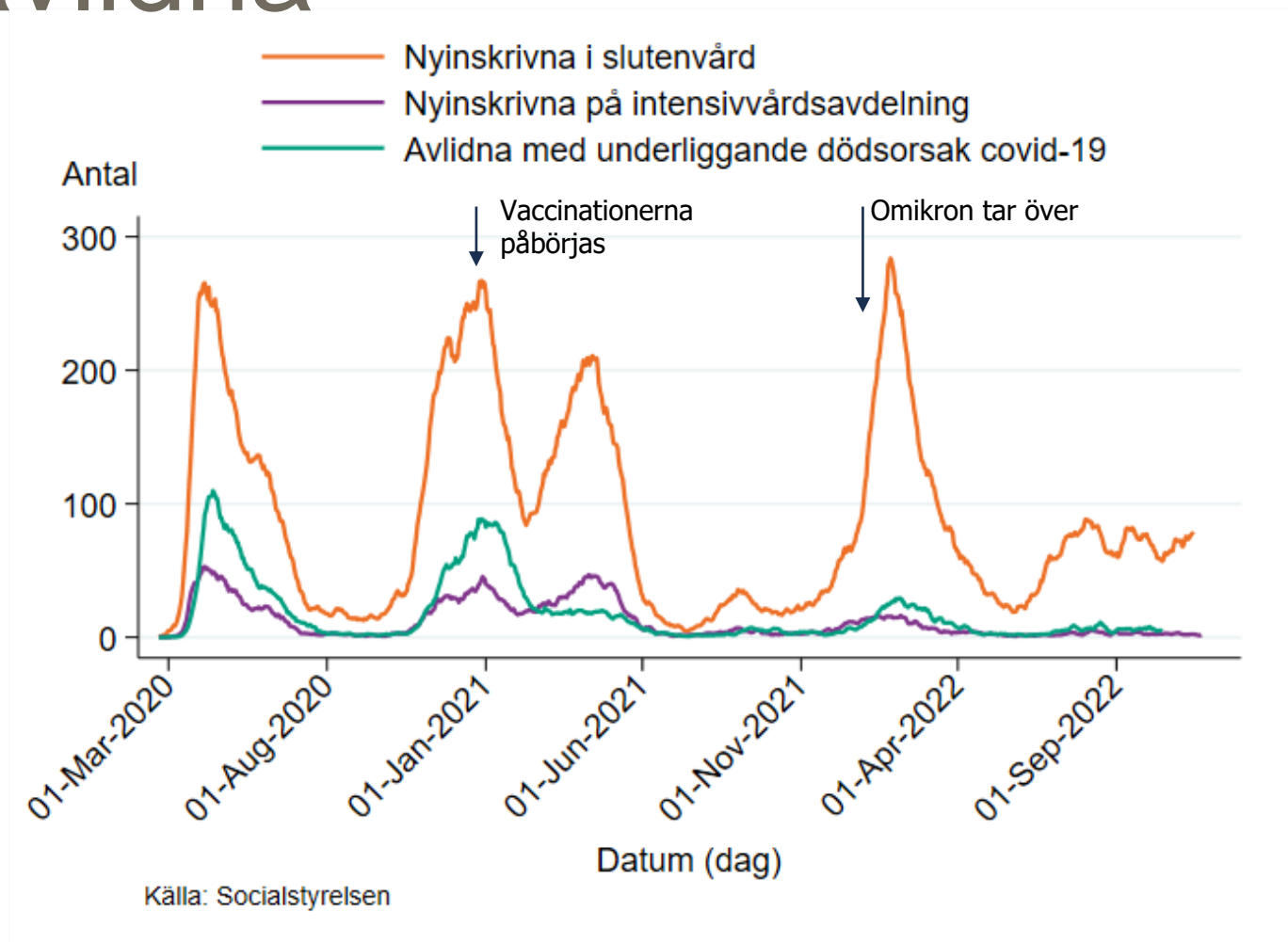


Vecka 48:

- 6 716 fall (+58 %)



# Nyinskrivningar i slutenvård och avlidna



- Data från Socialstyrelsen
- 2022-12-08
- Centrerat 7-dagars rullande medelvärde per dag



# Vaccinationstäckning till och med vecka 48

